

S. E. 1/4 OF SECTION 6, T.5N., R.1W., S.L.B.&M.

TAXING UNIT: 23, 25, 26

IN RIVERDALE CITY & WEBER COUNTY

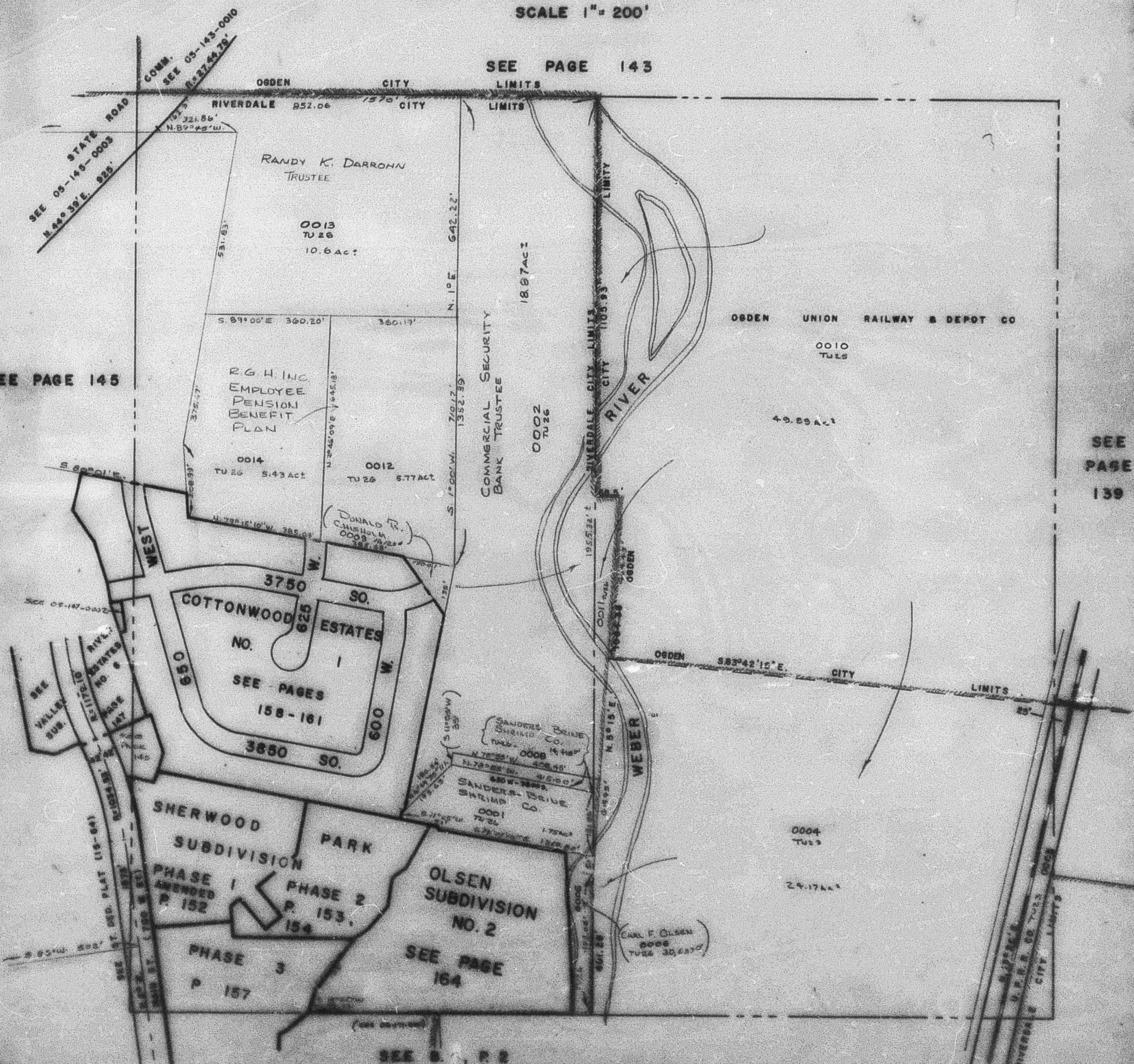
PREFIX: 05-144

SCALE 1" = 200'

SEE PAGE 143

SEE PAGE 145

SEE PAGE 139



SEE S. P. 2